

STRONGBOND

Transform your look with
CONCRETE CONCEPTS



STRONGBOND CONCRETE CONCEPTS

1-4 Easy steps

1

STRONGBOND

PRIME - IT

P51/ P9/ WPM300

Prime and Bond your Concrete

2

STRONGBOND

COLOUR - IT



Add your Colour-It to Compound

3

STRONGBOND

APPLY - IT

A46

Patch your concrete with Compound

4

STRONGBOND

SEAL - IT

**WPM163/ BONA
TRAFFIC HD /
EP705/ SURE SEAL**

Seal your concrete after Colour-It applied

STRONGBOND

COLOUR-IT



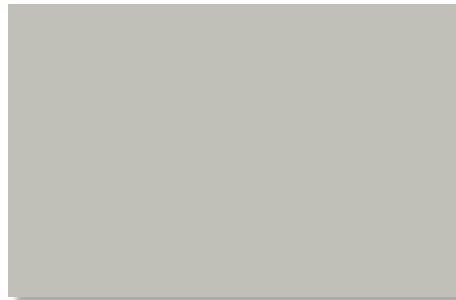
SELECT YOUR COLOUR....

PRIME- IT, COLOUR-IT, APPLY -IT, SEAL-IT

Easy to use, just add Colour-It to your compound



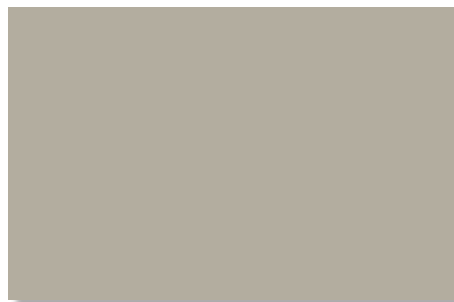
Gunmetal



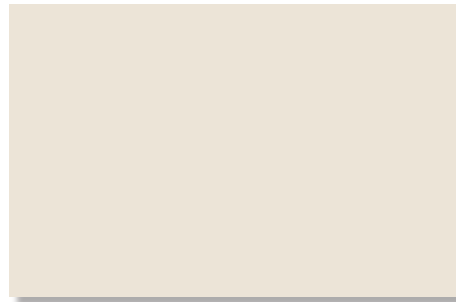
Silversand



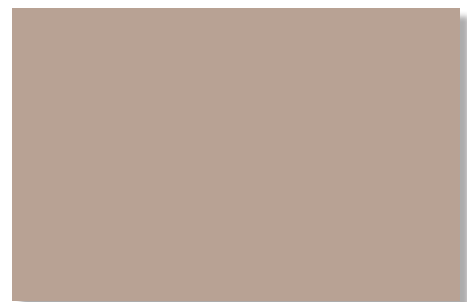
Ricochet



Cork



Chateau

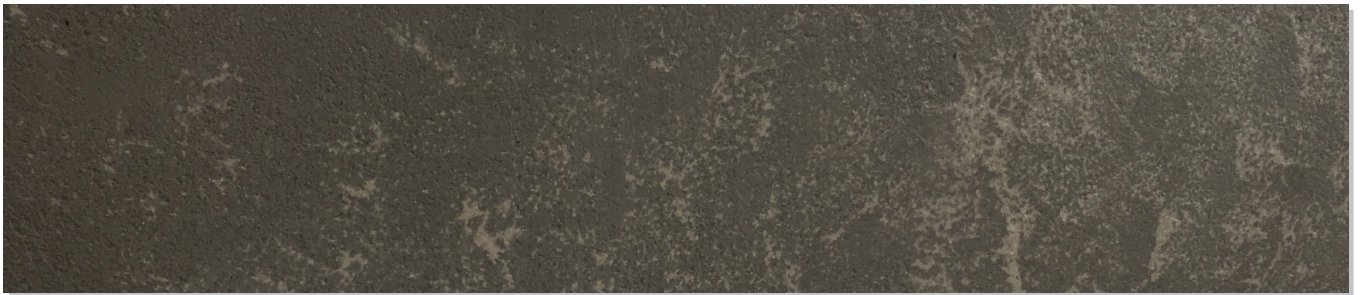
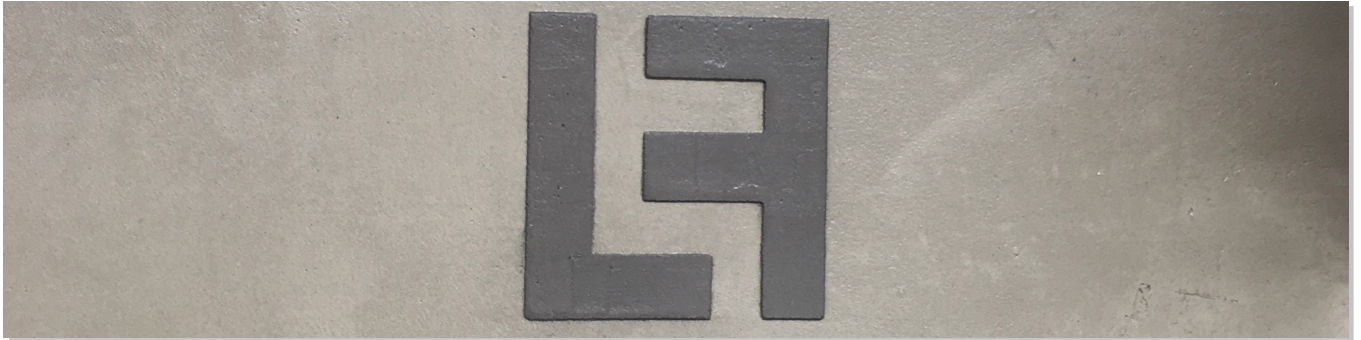


Dune

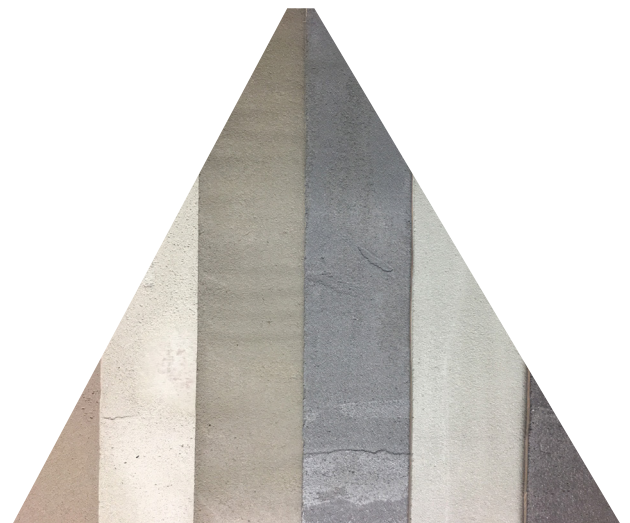
Colour-It is easy to mix and apply with a variety of colours to choose from. It will transform your old concrete to make it look better than new.

Colour is achieved by tinting the mixed water, therefore the colour is integral through the entire thickness of the product.

Colours may vary between batches and the print samples are a guide only



Design opportunities are never ending. Textures can be added easily to your creations with various trowelling techniques. For e.g. use swirls for a rustic look and smooth finishes for an industrial look. Colour-It can be used internally and externally.



Visit www.lookfloors.co.nz to view the data sheets.

For more information on the system, contact your local Look Floors representative today.

STRONGBOND

COLOUR-IT



PRODUCT INFORMATION:

960g Colour-It to 20kg of powdered product, 5.6 litres of water

600g Colour-It to 12.5kg of powdered product, 3.5 litres of water

240g Colour-It to 5kg of powdered product, 1.4 litres of water (*recommended mixing batch size*)

- Colour-It consists of the powdered oxide suspended in a water-based dispersion. Colour-It also mixes more readily with cement based products and therefore significantly faster colour development and better dispersion of colour takes place when mixing. Colour-It packs are produced using high quality UV stable micronized synthetic iron oxide pigments and specially designed dispersant's and additives. Please note when left standing for a period of time, the product can settle. Stirring or agitating is highly recommended prior to use to ensure contents are thoroughly mixed. Colour-It packs have been designed for ease of use.
- Colour-It has a 12 month shelf life.

DISCLAIMER:

- *Ardex A46 was used to prepare physical colour samples.*
- *Variations in colour may occur between batches.*
- *Always work within Manufacturers Product Specification Sheets.*
- *Bonding to substrate is the responsibility of the applicator.*
- *Site conditions may affect results i.e. porosity, temperature, air flow.*
- *Colours may vary between batches and the print samples are a guide only.*
- *Substrate movement and/or accelerated drying may cause cracking.*

Some parts of this system may contradict specification sheets i.e. minimum thickness of product. This Concrete Concept system works on a combination of products coming together which have been tested to be true, however please note before any contractor applies this product they must understand whether the product is going to meet customers expectations and requirements. If in doubt, please seek advice from our nearest branch

TIPS - Concrete Concepts:

- 5Kg batches of Ardex A46 gives you time to apply and create the required design.
- Use scales – it's important to get the mixing ratios right.
- For large areas - breaking it down to smaller area's with a tiled design.

STRONGBOND

CONCRETE CONCEPTS

INSTRUCTIONS - Please refer to each product specification sheets.

PRIME-IT

- 1: Mechanically prepare concrete by diamond grinding the substrate - 100% of the surface, then vacuum thoroughly.
- 2: Any cracking shall be repaired via Ardex RA56 crack repair system or KLB EP52 crack repair system, then grind crack to repair flush.
 - For standard absorbent concrete PRIME by Ardex P51 (dilution rate 2 parts water to 1 part P51, allow to dry.)
 - For non porous/abraded surface or plywood/fibre cement, PRIME by Ardex P9, allow to dry.
 - If coating with KLB EP705 - the priming system shall be one coat Ardex WPM300, applied at 2 sqm per litre, sand blinded. For optimum adhesion and colour consistency, priming with Ardex WPM300 is recommended.

COLOUR-IT

- 3: Weigh 5kg of Ardex A46 powder - weighted into a dry 10 Litre bucket.
- 4: Separate bucket – 10 Litre dry bucket – measure/weigh 1.4 Litres of clean drinkable water.
- 5: Add 240grams of Colour-It to the 1.4 Litres clean drinkable water, make sure the pottle is immersed into the mixed water to empty the contents.
- 6: Add 5kg of Ardex A46 Powder into the tinted mixed water (no need to add anymore water.)
If the tinted water has been sitting still for more than 5 minutes – FURTHER MIXING WILL BE REQUIRED.
- 7: Mix thoroughly for 2 minutes until uniformed colour and a creamy paste is achieved.

APPLY-IT

- 8: Can be applied with a Versablade no:680-KBC double bond trowel, then smoothed using a flat trowel or apply it via a flat trowel only. (If you would like to add extra design finishes – see page 4 i.e. swirls with trowel, sponge, grit ...the sky is your limit, get creative.)

SEAL-IT

- 9: For external situations after 4 hours apply 1x coat WPM163 as a curing compound. After 24 hours x 2 further coats of WPM163 can be applied. For internal situations after 24 hours this can be sealed via WPM163 – applying 2/3 coats of WPM163 sealer.

Sealing options:

Sealing options are Ardex WPM163 (internal and external), Bona Traffic HD for indoors use only or KLB EP705 for internal use only or Sure Seal for outdoors and invisible finishes.

* EP705 will yellow on exposure to UV i.e. in front of windows and doors.

Check batch production date before use

STORAGE CONDITIONS:

Keep from freezing. Keep cool. Protect from sunlight. Store at temperatures not exceeding 80 °C/ 176 °F.

PRECAUTIONS:

KEEP OUT OF REACH OF CHILDREN. Before using or handling, read the Safety Data Sheet and Warranty.
DO NOT TAKE INTERNALLY. Avoid contact with eyes and skin. Do not breathe mist. Wear rubber gloves and aprons to protect skin and wear safety eye goggles. Use good hygiene when handling this product and wash and bathe after each use. Be sure to wash clothing after each use.

