

Tredsafe®

THE EDGE
ON SAFETY

TREDLOCK
ADHESIVE

"LOSE THE SCREWS"



Designed for TREDSAFE
Aluminium Profiles



Indoor and outdoor use



Light traffic ready in 1 hour
Heavy traffic after 24 hours



Suitable for damp substrates



Fast alternative to screws
and plugs

Technical Data

Density DIN EN ISO 2811-1	1.38±0,05 g/cm ³
Skin forming time app.	< 10 min
Application temperature - adhesive & substrate	+5°C to +35°C
Cure rate (within first 24 hours)	≥ 2.85mm
Shore A hardness	48-52
Tensile strength ISO 8339-A, 100%	App. 1.8 N/mm ²
Maximum movement tolerance	10%
Temperature stability range	-40°C to +80°C
Shelf life	18 months
Curing system	Neutral curing
Packaging	290ml cartridges
Colour	Grey

Rate of curing depends on temperature and humidity. The data given refer to tests at standard conditions (20°C / 50% rel. humidity). Under these conditions, a 5x5mm joint will be light traffic ready in one hour.

Data given were determined shortly after production, and may slightly vary with increasing age of product. They are not meant for specification purposes.

For safety data, see Safety Data Sheet. Take all measures resulting from the safety data sheet and hazard markings to prevent accidents and protect health.

Product Description

TREDLOCK is an elastic, single component adhesive for indoor and outdoor use.

Special Properties

- Elastic adhesive based on hybrid polymer technology.
- Fast curing.
- Low odour formulation, not corrosive.
- Ageing and weather-resistant, good UV resistance.
- Can be used on damp substrates.
- Compatible with paints (DIN 52452-4)
- Any substrate can be tested. You will need to supply samples (which cannot be returned) and allow 8 weeks for testing and results to be returned.

Fields of Application

- For adhesion to concrete, pre-cast stairs, ceramics, wood and metal substrates.
- Not suited for plastics with in general poor adhesion to silicones (eg. PE, PP, PET) or marble/natural stone.

Yield

- Metres of adhesive per 290ml cartridge for a standard 43mm insert profile = approx. 12m. Based on recommended application rate for this profile: 2 lines x 5mm bead.

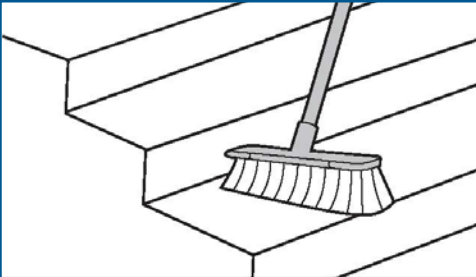
IMPORTANT NOTES

- If the steps are untreated wood the stairs must be primed or varnished prior to the application.
- Concrete does not require priming.
- On powder-coated substrates, adhesion has to be tested carefully, since it can be affected negatively depending on the coating used (may even vary for different colours of the same brand of powdercoating).
- TREDLOCK is a quick dry adhesive which results in a fast skin formation time. Any issues relating to skin formation can be avoided by following the provided installation instructions.
- Where there are any concerns around the cleanliness of the substrate, i.e. in areas of high traffic, where cleaning products may have been used, or in environments where food residue may be tread, these areas should be cleaned with Isopropyl Alcohol or equivalent first and allowed sufficient time to dry prior to application.
- For application to non-porous substrates, i.e. glass, metal, glazed tiles follow instructions in Step 3 "For non-porous substrate applications only." The ingredients in the adhesive that creates the fast drying properties require some level of moisture to cure. Non-porous surfaces and substrates do not contain any moisture for the adhesive to extract/absorb during curing. This is easily rectified by applying a thin, even mist of water.

INSTRUCTIONS FOR USE

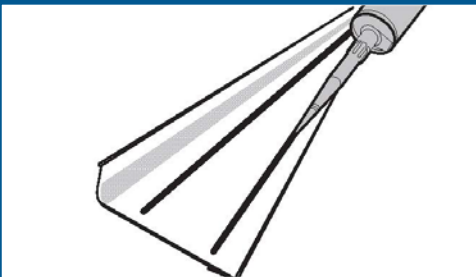
Step 1

Clear the stairs of all surface debris. Clean profile using isopropyl alcohol (or similar).



Step 2

Apply 5mm bead line(s) to the underside of the TREDSAFE profile, using a caulking gun. Line(s) need to be applied parallel to the TREDSAFE profile edge. See below table for TREDSAFE recommended application rate. TREDLOCK should be applied back from the edges of the profile to prevent visible signs of adhesive oozing.



Above image based on 43mm profile application rate

Lines Required Per Roll Width

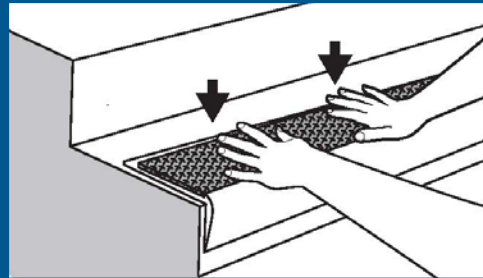
20mm - 30mm	1 Line
30mm - 60mm	2 Lines
60mm +	3 Lines

Step 3

Ensure each stair nosing is fixed to the substrate immediately after adhesive is applied. Fix profile to the substrate with slight pressure, moving back and forth slightly several times before resting in final position. Remaining thickness of adhesive should be approx. 2mm.

FOR NON-POROUS SUBSTRATE APPLICATIONS ONLY.

Onto the freshly applied TREDLOCK surface, apply an even mist of water (not too much water or it may cause an uneven seal – do not mist both surfaces). Fix profile to the substrate and move slightly back and forth several times before resting in final position.



Step 4

Secure the area to prevent traffic for 60mins, after which suitable for light traffic for 23 hours. After 24 hours the adhesive will have cured sufficiently to allow normal traffic flow.

